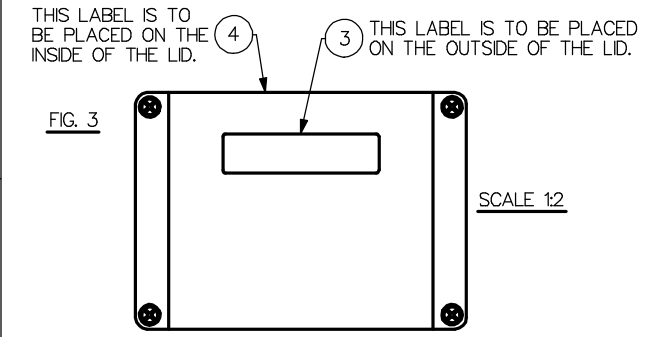


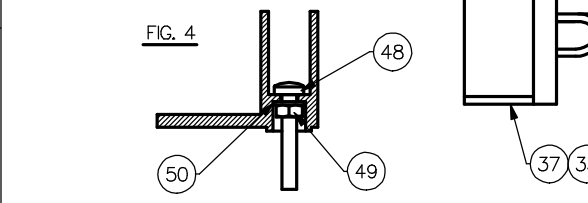
PCB INTERNAL WIRING

CABLE ASSEMBLY	BROWN TERMINATION	BLUE TERMINATION	RED TERMINATION	BLACK TERMINATION	GREEN TERMINATION	YELLOW TERMINATION	YELLOW/GREEN TERMINATION
POWER LEAD	POWER IN "+"	POWER IN "-"					
FAN "A" LEAD	FAN A "+"	FAN A "-"					
FAN "B" LEAD	FAN B "+"	FAN B "-"					
METERING MOTOR LEAD		CON 1 - 2	CON 1 - 1	CON 1 - 5	CON 1 - 6	CON 1 - 7	
AGTATOR MOTOR LEAD	CON 1 - 4	CON 1 - 3					
FORWARD SPEED LEAD	CON 2 - 1	CON 2 - 3					CON 2 - 2
CUT OUT LEAD	CON 2 - 4	CON 2 - 5					
HOPPER LEVEL SENSOR "N"	CON 2 - 6	CON 2 - 8					CON 2 - 7

63	G734-015	1	CABLE GLAND NUT PG9 BLACK
62	G734-014	1	CABLE GLAND PG9 BLACK
61	F713-011	2	M12 SHAKEPROOF WASHER INT ST/ST
60	V671-007	60mm	HEATSHRINK 3/1 SELF-ADHESIVE
59	W683-007	0.06M	EQUIPMENT WIRE 7/02 GREEN
58	W683-006	0.12M	EQUIPMENT WIRE 7/02 BROWN
57	W683-005	0.09M	EQUIPMENT WIRE 7/02 BLACK
56	W683-004	0.09M	EQUIPMENT WIRE 7/02 PINK
55	W683-002	0.12M	EQUIPMENT WIRE 7/02 BLUE
54	W683-001	0.09M	EQUIPMENT WIRE 7/02 RED
53	T609-041	4	BLUE RING TERMINAL M4
52	T600-006	1	DC CONNECTOR 0.1" 6WAY
51	Z780-547	1	FPO JUNCTION BOX SWITCH LABEL
50	F714-003	4	WASHER M4 WAVE
49	F709-015	4	NUT FULL M4 ST/ST
48	F729-081	4	SCREW M4x25mm POZI PAN ST/ST
47	T610-031	3	RED SEAL WEATHERPACK
46	T610-030	3	MALE PIN CONTACT 40E26
45	T608-055	1	3WAY MALE WEATHERPACK CONNECTOR
44	G730-024	3	GROMMET SLEEVE PV11B
43	F724-001	4	CABLE TIE 4" WHITE
42	U803-003	18GR	POTTING COMPOUND 2PART 500grm
41	Z790-093	1	3/4" TANK CONNECTOR (FULL THREAD)
40	Z789-037	1	END CAP CAPACITANCE SENSOR
39	A201-004	1	CAPACITANCE SENSOR N/O PCB ASSEMBLY
38	V677-164	1	CAPACITANCE SENSOR N/O SELF-LAMINATE LABEL
37	T608-207	1	8WAY AMP FPO RECEPTACLE HOUSING
36	W681-012	6.28M	CABLE 2CORE 3AMP ROUND BLACK
35	G734-010	1	CABLE GLAND NUT PG7 BLACK
34	G734-006	1	CABLE GLAND PG7 BLACK
33	T605-011	7	1/4" FEMALE PUSH-ON SMALL
32	W680-010	1.31M	CABLE 6CORE 16/02 ROUND BLACK
31	W681-001	6.1M	CABLE 3CORE 3AMP ROUND BLACK
30	G734-013	2	CABLE GLAND PG11 NUT
29	G734-009	2	CABLE GLAND PG11 BLACK
28	T605-012	4	1/4" FEMALE PUSH-ON LARGE
27	T608-107	3	2WAY RECEPTACLE HOUSING FPO HORZ/VERT
26	W681-021	0.9M	CABLE 2CORE 20AMP ROUND BLACK
25	G734-037	1	GORE VENT NUT M12
24	Z790-083	1	GORE VENT SYSTEM M12 x 15
23	T609-068	2	YELLOW RING TERMINAL M4
22	G734-011	1	GLAND LOCKNUT PG16 BLACK
21	G734-007	1	CABLE GLAND PG16 BLACK
20	T608-280	1	SB-50AMP 2POLE POWER CONNECTOR GREY
19	W681-025	0.49M	CABLE 2CORE 51AMP ROUND BLACK
18	T600-008	1	DC CONNECTOR 0.1" 8WAY
17	T600-007	1	DC CONNECTOR 0.1" 7WAY
16	F714-002	4	WASHER M3 WAVE
15	F709-002	4	NUT FULL M3
14	F701-051	4	SCREW M3x10 POZI-PAN ZP
13	T606-125	1	CPC SEALING CAP SIZE 17
12	T606-150	11	CPC PIN CRIMP 26-24AWG
11	T606-093	2	CPC PIN CRIMP 102-2.03 DIA
10	T606-004	1	CPC 17-16WAY STANDARD PANEL MOUNTED
9	W680-021	0.11M	CABLE 18CORE 7/02 RND BLACK (UNSPRND)
8	S627-010	1	SWITCH MOUNTING CLIP & SEAL
7	S625-002	1	PUSH BUTTON SWITCH TACTILE PANEL MOUNTED
6	K634-007	2	MORS SEALING BOOT U1600
5	S620-022	2	TOGGLE SWITCH SP ON-ON 5236 MADB
4	Z785-535	1	WIZ APPLICATOR CTRL J/B WRING LBL
3	Z785-534	1	WIZ APPLICATOR CTRL J/B ID LABEL
2	A380-003	1	WIZ APPLICATOR CTRL (F/B) PCB ASSY
1	M741-095	1	WIZ APPLICATOR CTRL J/BOX DRILLED



FIT LID TO BOX IN THIS ORIENTATION, SO THAT WITH LABEL THE CORRECT WAY UP THE POWER LEAD EXITS TO THE LEFT.



DIMENSIONS IN mm

RDS Technology Ltd
Cirencester Road,
Minchinhampton, STROUD,
Glos. GL6 9BH, UK
Tel: +44 (0) 1453 733300
Fax: +44 (0) 1453 733322

ISSUE	D.O.I.	SIGN	DATE	ISSUE	D.O.I.	SIGN	DATE
01	6567	MB	10.11.06				
02	6611	MB	27.3.07				
03	6617	MB	10.4.07				
04	6620	MB	10.5.07				

MATERIAL	TOLERANCES	SCALE	TITLE
	UNLESS OTHERWISE STATED	1:1	WIZARD APPLICATOR CONTROL JUNCTION BOX ASSEMBLY
FINISH	SURFACE TEXTURE UNLESS OTHERWISE STATED ALL VALUES IN um	CHECKED	COMPUTER NO. S/AC/380-1-010
		APP'D	

SCALE	TITLE
1:1	WIZARD APPLICATOR CONTROL JUNCTION BOX ASSEMBLY
COMPUTER NO. S/AC/380-1-010	
DRG. NO. AC380-1-010	SHEET A
	USES SHEETS A-J

THIS DRAWING IS THE PROPERTY OF RDS TECHNOLOGY LTD. AND MAY ONLY BE USED IN THEIR INTEREST © 2006