



# iSOCAN

A contemporary operator interface for control and monitoring applications on mobile machinery

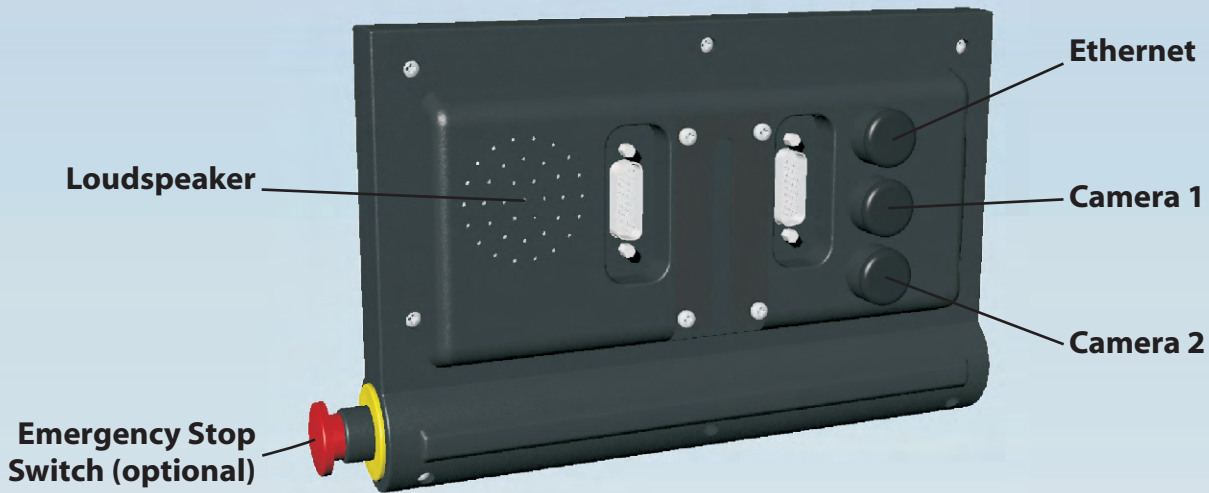


W: 227mm x H: 157mm x D: 45mm

The new iSOCAN terminal from RDS uses a 7" touchscreen (16 x 9 format) display and also includes physical keys to provide a modern and ergonomic operator interface for a wide variety of applications.

[www.rdstec.com](http://www.rdstec.com)

## RDS iSOCAN rear view



### Specification:

|                       |   |
|-----------------------|---|
| Power supply:         | 10 - 30 Volts DC  |
| Current consumption:  | 500 mA  |
| Display:              | High brightness (400mcd) colour, 7" widescreen format (800 x 480)<br>LCD with touch-screen (155 x 95mm)   |
| Front panel switches: | 16 backlit physical keys for application specific functions<br>Integral true emergency stop switch (optional)   |
| Processor:            | ARM Cortex A8 CPU running at 800Mhz   |
| Operating system:     | WEC7  |
| Memory:               | 256MB RAM<br>512MB Flash  |
| Communication Ports:  | SD Card slot<br>Two composite video camera inputs<br>USB 2.0 OTG (for Microsoft Active Sync etc)<br>Two USB 2.0 host connections (for pen drive etc)<br>10/100base TX Ethernet<br>Two CAN 2.0B ports (J1939 compatibility etc)<br>Two uncommitted RS232 ports |
| Inputs:               | Four - can be configured as digital or analogue   |
| Outputs:              | Two - 1 amp each  |
| Speaker:              | 1.5 Watt for alarms etc   |
| Protection:           | Reverse polarity protection   |
| Enclosure:            | Custom ABS Enclosure  |
| Mounting:             | Free-standing   |
| EMC:                  | 2004/108/EC ISO 14982   |
| Temperature:          | -20°C to +70°C operating temperature  |
| Vibration:            | 5G @ 10 to 500Hz  |
| Shock:                | 50G   |
| Sealing:              | IP54  |
| Dimensions:           | W: 227mm x H: 157mm x D: 45mm   |

**Note: For OEM manufacturers the exact functionality is normally customised to the precise requirements. This data sheet is to give an overview of the possibilities.**